

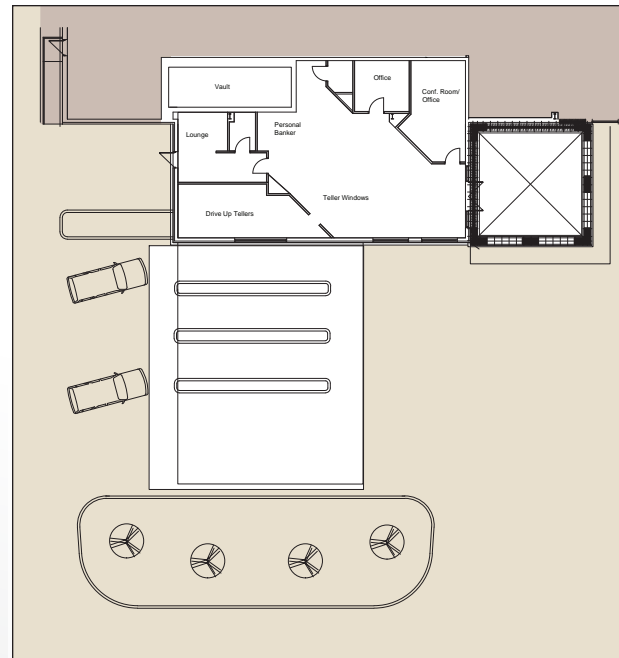
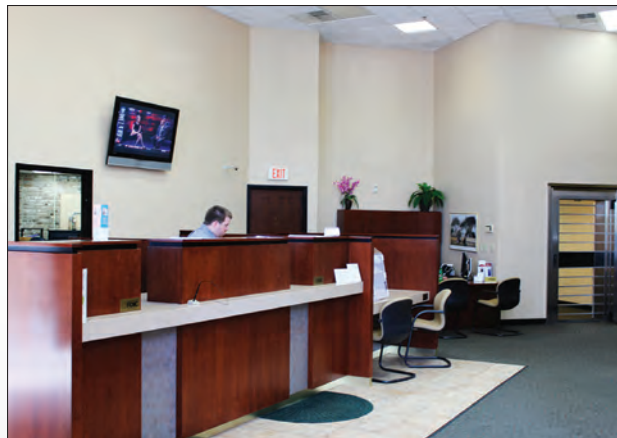
FOR LEASE

**Suite 200** 205 E. Nifong Boulevard • Columbia, MO 65203



**(573) 446-5500**

[ForumGroup.com](http://ForumGroup.com)



### SUITE SUMMARY

- 2,300 square feet
- Move-in ready (including vault and other bank equipment)
- ADA compliant restroom
- 3 drive-thru lanes and 1 ATM lane
- Pylon space available
- Neighboring tenants include Gerbe's Supermarket, Kirlin's Hallmark, and Penn Station East Coast Subs.

For leasing information,  
contact **Jay Lindner**  
[jay.lindner@forumgroup.com](mailto:jay.lindner@forumgroup.com)  
**(573) 446-5500**

*The above information is deemed to be accurate however it is subject to errors, omissions and change at any time.*

FOR LEASE

# Nifong Shopping Center

Columbia, Mo.

# FORUM

DEVELOPMENT GROUP

(573) 446-5500

[ForumGroup.com](http://ForumGroup.com)



## SUMMARY

- 82,000 square feet
- Providence Boulevard—26,000 vehicles per day
- Nifong Boulevard—18,000 vehicles per day
- Highly affluent and rapidly expanding section of Columbia
- 3 minute drive from downtown and the University of Missouri
- Excellent cotenants including Gerbe's Supermarket, Kirlin's Hallmark & Penn Station East Coast Subs

	Population	Average HH Income
1 mile	8,637	\$48,244
3 mile	51,676	\$60,637
5 mile	100,557	\$62,534



For leasing information, contact Jay Lindner  
[jay.lindner@forumgroup.com](mailto:jay.lindner@forumgroup.com)  
(573) 446-5500

*The above information is deemed to be accurate however it is subject to errors, omissions and change at any time.*